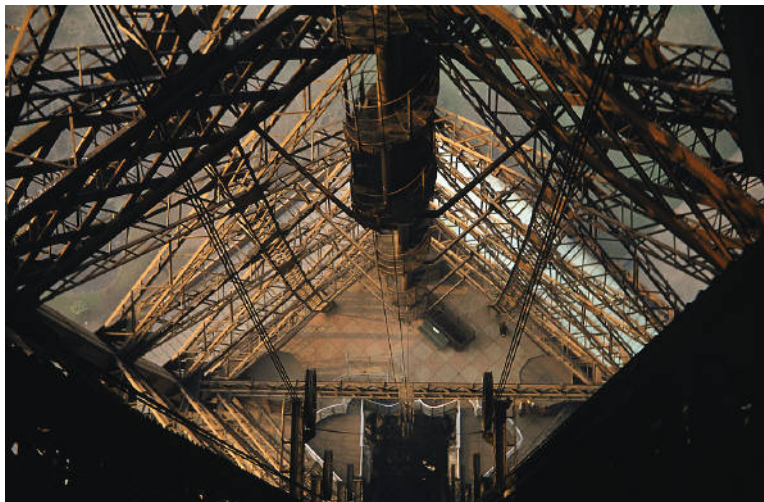


Steel Shapes

by CCAD inc.

The Steel Shapes program is a cost-effective add-on for AutoCAD 14 and later that draws End, Side and Top views of common structural steel shapes.

New Features included a Steel Shapes Inquiry command to list the basic properties of an item and Steel Shapes Cut List command to replace an attribute or text object with the Steel Shape description.



CCAD inc. – AutoCAD Services
7575 Tyler Blvd., Suite C33, Mentor, Ohio 44060
Web Site: www.ccadinc.com

Copyrighted © 2008 by CCAD inc.

Table of Contents;

Installation 1
 Steel Shapes Window 5
 SteelShapes?..... 5
 Steel_Shapes_Cut..... 5
 Steel Shapes Web Site 5

Software License Agreement

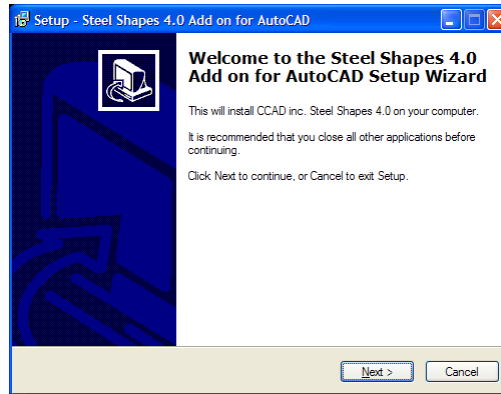
1. This is an agreement between Licensor and Licensee, who is being licensed to use Steel Shapes.
2. Licensee acknowledges that this is only a limited nonexclusive license. Licensor is and remains the owner of all titles, rights, and interests in the Software.
3. This License permits Licensee to install the Software on the number of computer systems designated in the purchase agreement. Licensee will not make copies of the Software or allow copies of the Software to be made by others, unless authorized by this License Agreement. Licensee may make copies of the Software for backup purposes only.
4. This Software is subject to a limited warranty. Licensor warrants to Licensee that the physical medium on which this Software is distributed is free from defects in materials and workmanship under normal use, the Software will perform according to its printed documentation, and to the best of Licensor’s knowledge Licensee’s use of this Software according to the printed documentation is not an infringement of any third party’s intellectual property rights. This limited warranty lasts for a period of 30 days after delivery. To the extent permitted by law, THE ABOVE-STATED LIMITED WARRANTY REPLACES ALL OTHER WARRANTIES, EXPRESS OR IMPLIED, AND LICENSOR DISCLAIMS ALL IMPLIED WARRANTIES INCLUDING ANY IMPLIED WARRANTY OF TITLE, MERCHANTABILITY, NONINFRINGEMENT, OR OF FITNESS FOR A PARTICULAR PURPOSE. No agent of Licensor is authorized to make any other warranties or to modify this limited warranty. Any action for breach of this limited warranty must be commenced within one year of the expiration of the warranty. Because some jurisdictions do not allow any limit on the length of an implied warranty, the above limitation may not apply to this Licensee. If the law does not allow disclaimer of implied warranties, then any implied warranty is limited to 30 days after delivery of the Software to Licensee. Licensee has specific legal rights pursuant to this warranty and, depending on Licensee’s jurisdiction, may have additional rights.
5. In case of a breach of the Limited Warranty, Licensee’s exclusive remedy is as follows: Licensee will return all copies of the Software to Licensor, at Licensee’s cost, along with proof of purchase. (Licensee can obtain a step-by-step explanation of this procedure, including a return authorization code, by contacting Licensor at 37713 Vine Street, Willoughby, Ohio 44094 440-951-8070) At Licensor’s option, Licensor will either send Licensee a replacement copy of the Software, at Licensor’s expense, or issue a full refund.
6. Notwithstanding the foregoing, LICENSOR IS NOT LIABLE TO LICENSEE FOR ANY DAMAGES, INCLUDING COMPENSATORY, SPECIAL, INCIDENTAL, EXEMPLARY, PUNITIVE, OR CONSEQUENTIAL DAMAGES, CONNECTED WITH OR RESULTING FROM THIS LICENSE AGREEMENT OR LICENSEE’S USE OF THIS SOFTWARE. Licensee’s jurisdiction may not allow such a limitation of damages, so this limitation may not apply.
7. Licensee agrees to defend and indemnify Licensor and hold Licensor harmless from all claims, losses, damages, complaints, or expenses connected with or resulting from Licensee’s business operations.
8. Licensor has the right to terminate this License Agreement and Licensee’s right to use this Software upon any material breach by Licensee.
9. Licensee agrees to return to Licensor or to destroy all copies of the Software upon termination of the License.
10. This License Agreement is the entire and exclusive agreement between Licensor and Licensee regarding this Software. This License Agreement replaces and supersedes all prior negotiations, dealings, and agreements between Licensor and Licensee regarding this Software.
11. This License Agreement is governed by the law of Ohio applicable to Ohio contracts.
12. This License Agreement is valid without Licensor’s signature. It becomes effective upon the earlier of Licensee’s signature or Licensee’s use of the Software.

Demo Version

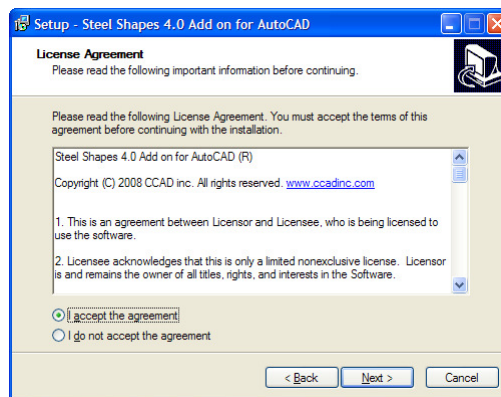
The Demo Version of Steel is full functioning except the sizes are limited.

Installation

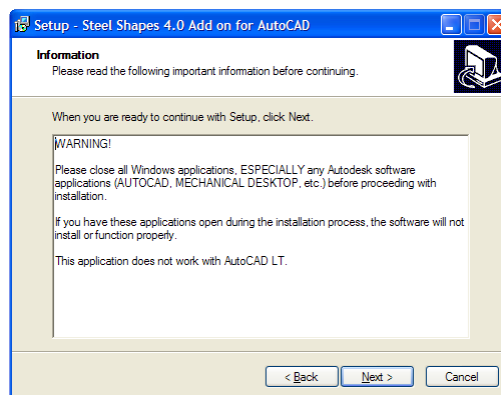
Unzip the file you received to a folder on your computer. Open the folder and double-click on the **SetupSteel40.exe** file.



Click the **Next>** button in the Welcome screen.

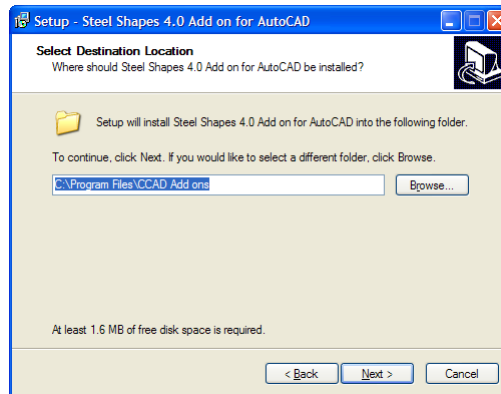


Read the License Agreement and select the **I accept the agreement button**. Click the **Next>** button in the License Agreement screen.



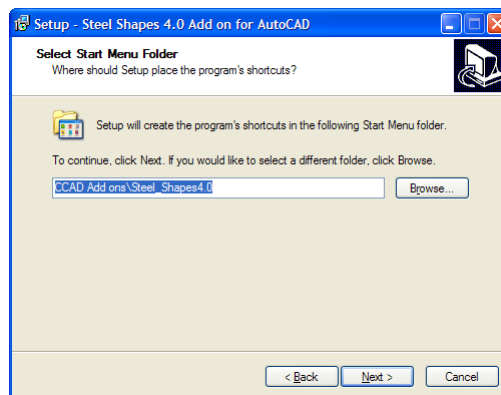
Close any open Autodesk applications. Click the **Next>** button in the Information screen.

Next you'll select the installation location.

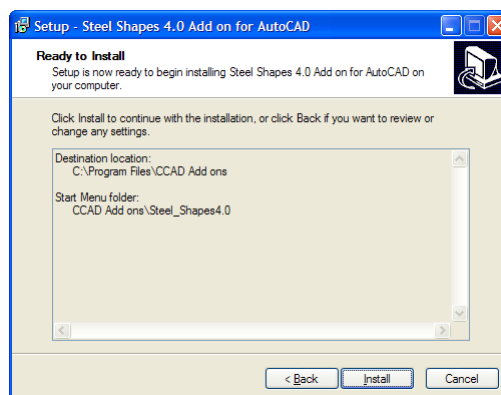


To change the installation location, click the **Browse...** button.

Click the **Next>** button in the Select Destination Location screen. If the folder already exists, you will be asked to confirm the location.

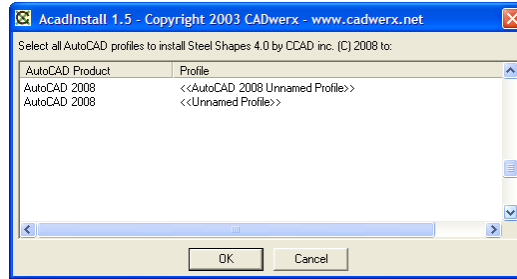


To change the Start Menu Folder location, click the **Browse...** button. Click the **Next>** button in the Select Start Menu Folder screen.



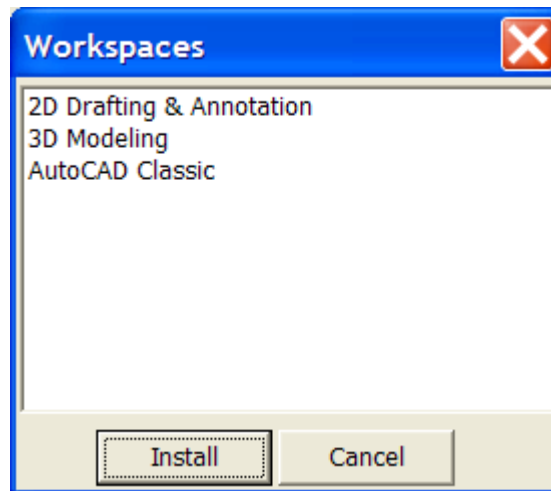
The next screen summarizes your choices to this point. . Click the **Next>** button in the Ready to Install screen.

Important! You must select a profile!

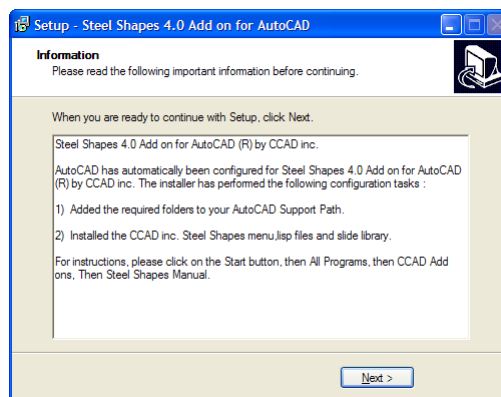


AutoCAD uses Profiles to manage groups of configuration settings. Choose all the Profiles you wish to use Steel Shapes with. Select OK to proceed.

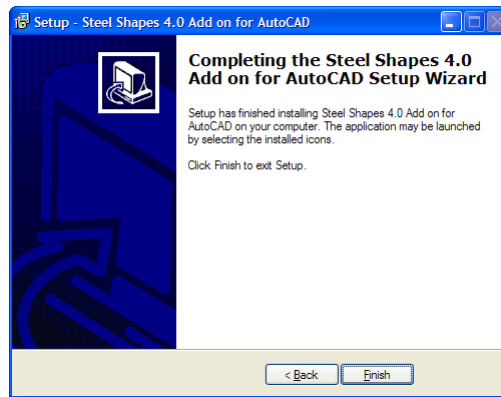
If your release of AutoCAD supports Workspace, select the Workspace you wish to include **Steel Shapes**.



Click on the **Install** button to continue with the installation.




Review the information about the changes made by the setup.



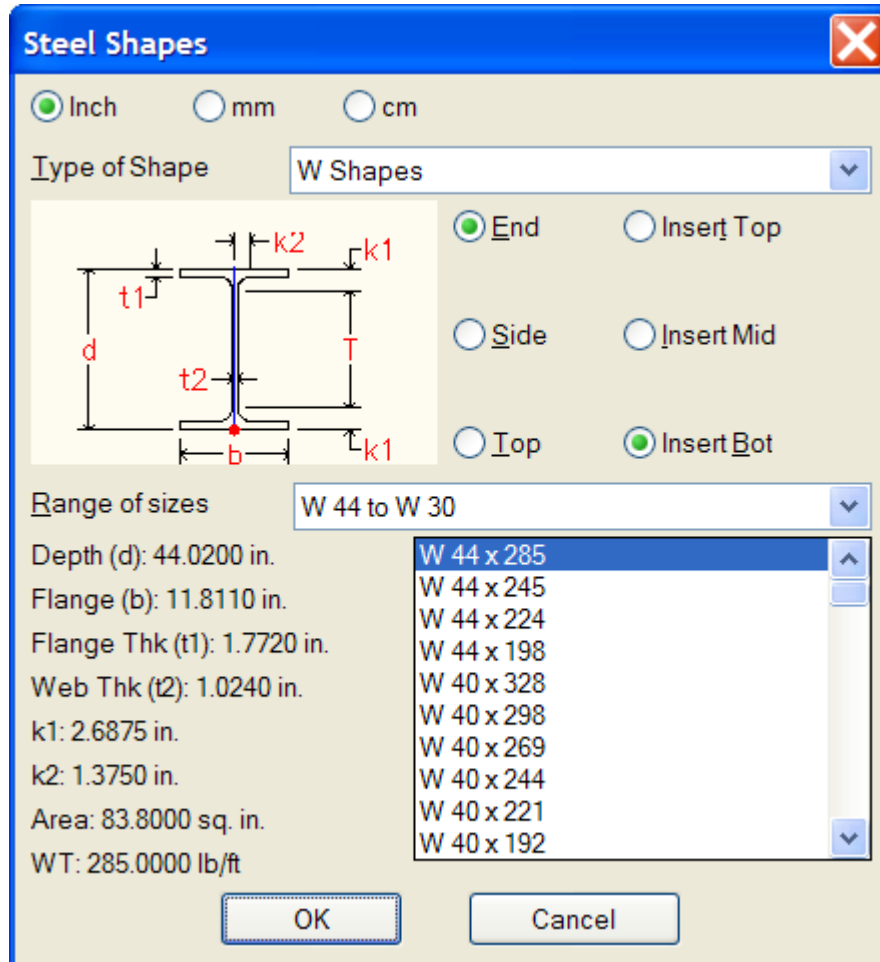
You are now ready to start using Steel Shapes!

See <http://www.ccadinc.com/addons.html#faq> for the latest in Frequently Asked Questions about CCAD inc. Add ons for AutoCAD.

Steel Shapes Window

 All Steel Shapes are drawn by selecting options from the Steel Shapes dialog box. Choose the measurement system from the radio buttons along the top of the window. Select the category of shape from the **Type of Shape** drop down. The End, Side or Top view is selected using radio buttons. The insertion point can be along at the Top, Middle or Bottom of the shape. The Preview updates to show the selected view where the insertion point is located.


Each category of shapes is organized into size ranges. Select the desired range and then pick the specific size to insert and select the **OK** button.



SteelShapes?

 The SteelShapes? command lists in the command line the type of Steel Shapes selected.

Steel_Shapes_Cut

 The Steel_Shapes_Cut command assists in creating cut lists. Just select a Steel Shape to read its imbedded description, then select a text or attribute object. The value of the text or attribute will be replaced by the imbedded description.

Steel Shapes Web Site



Short cut to Steel Shapes Web Site.